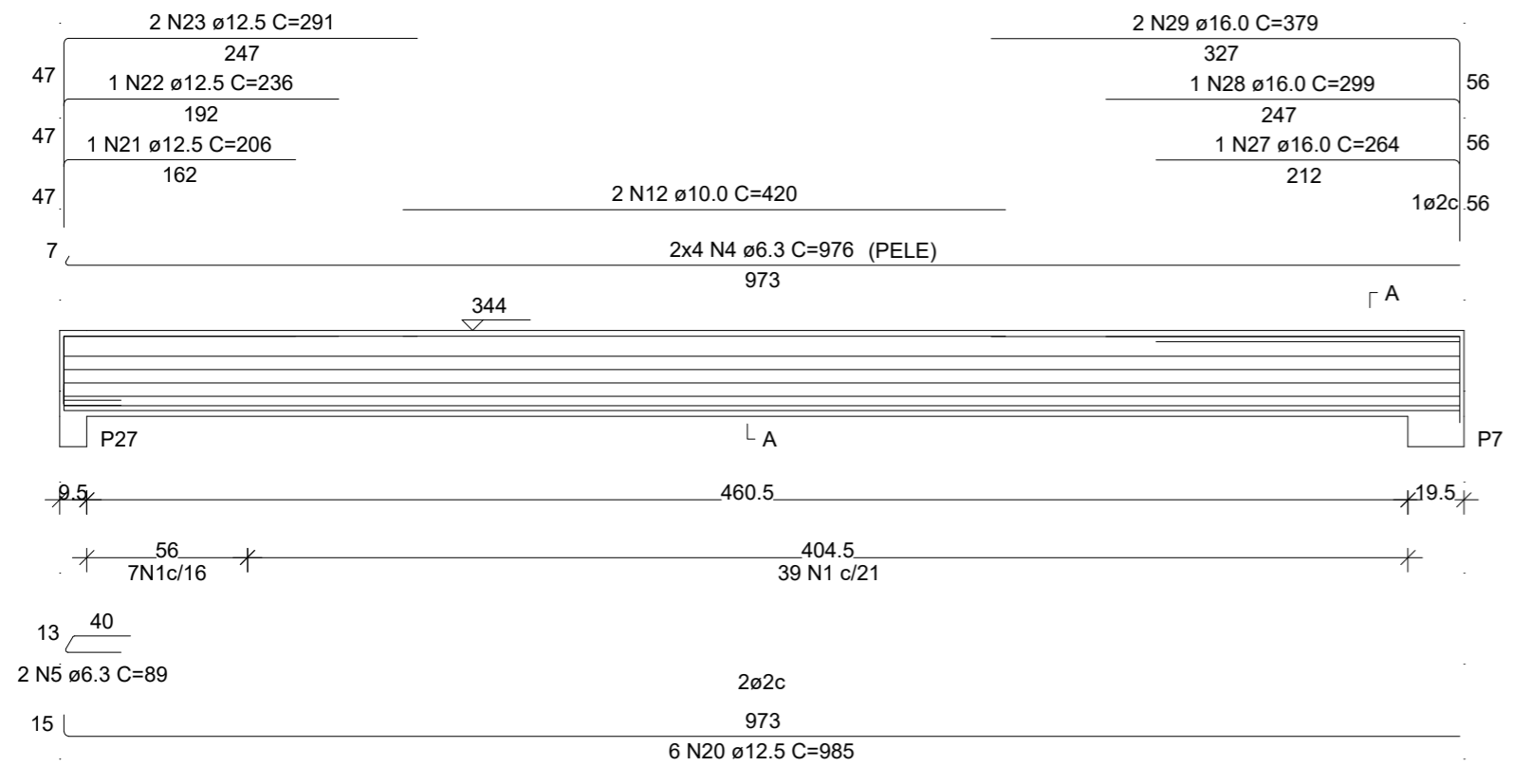


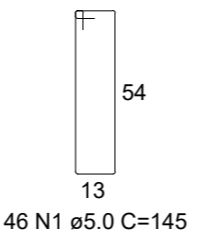
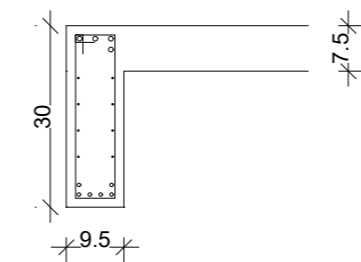
### V12

ESC 1:50



#### SEÇÃO A-A

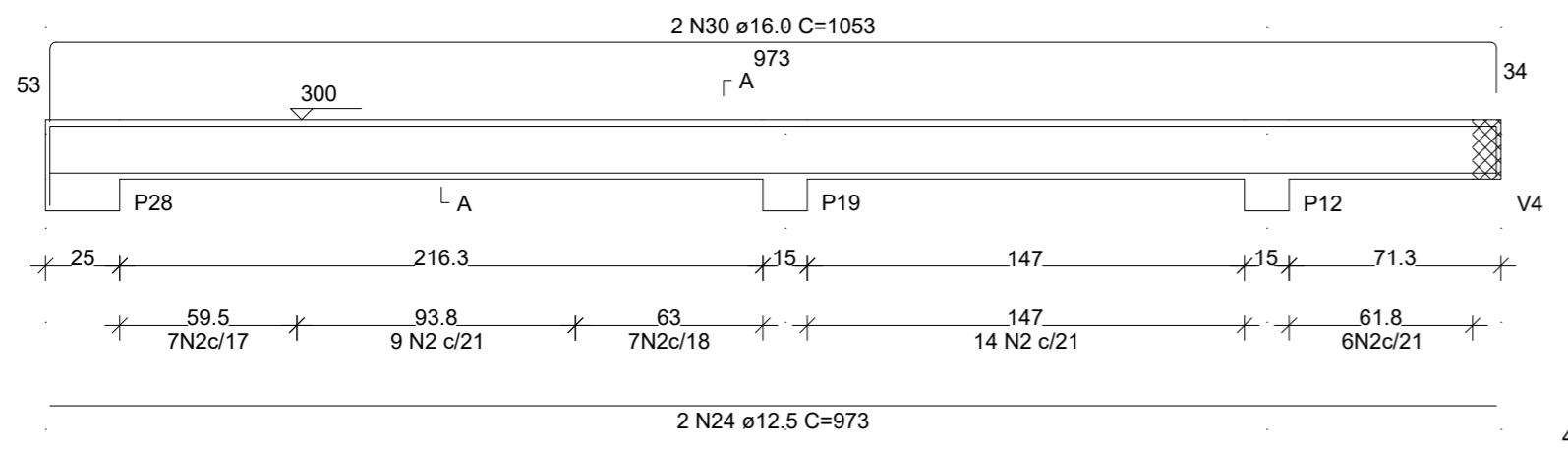
ESC 1:25



As costura 2.5 cm<sup>2</sup>/m

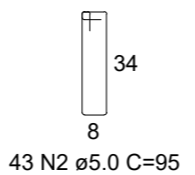
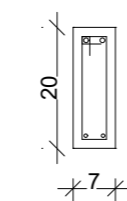
### V13

ESC 1:50



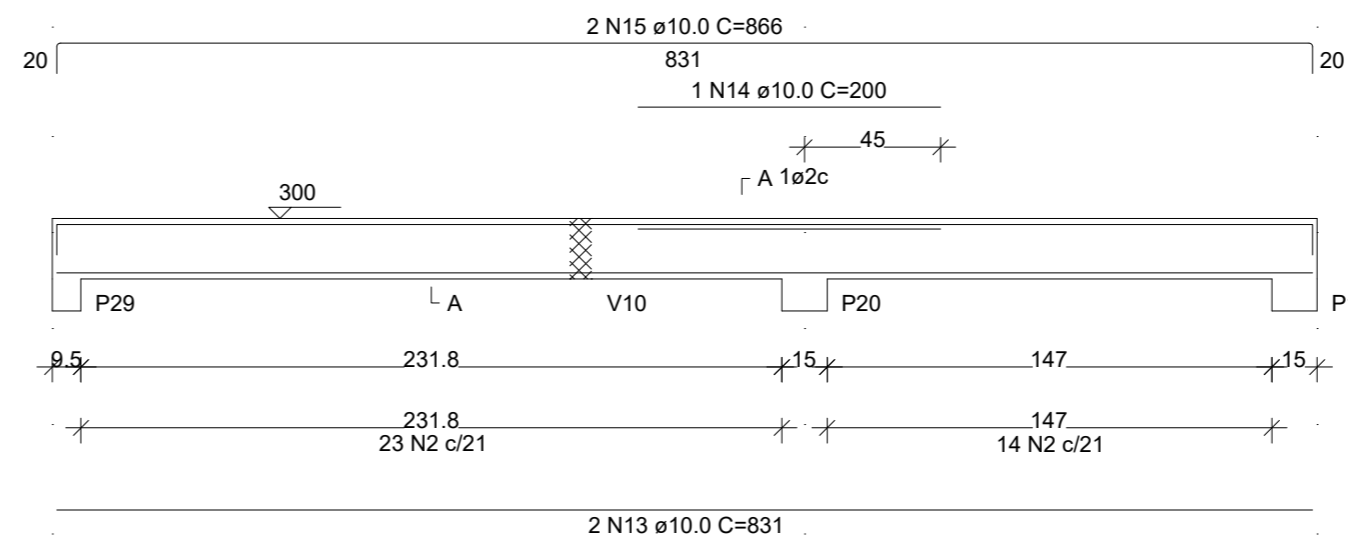
#### SEÇÃO A-A

ESC 1:25



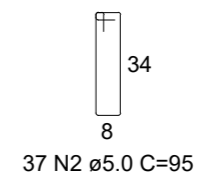
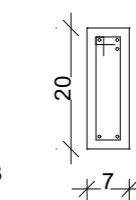
### V14

ESC 1:50



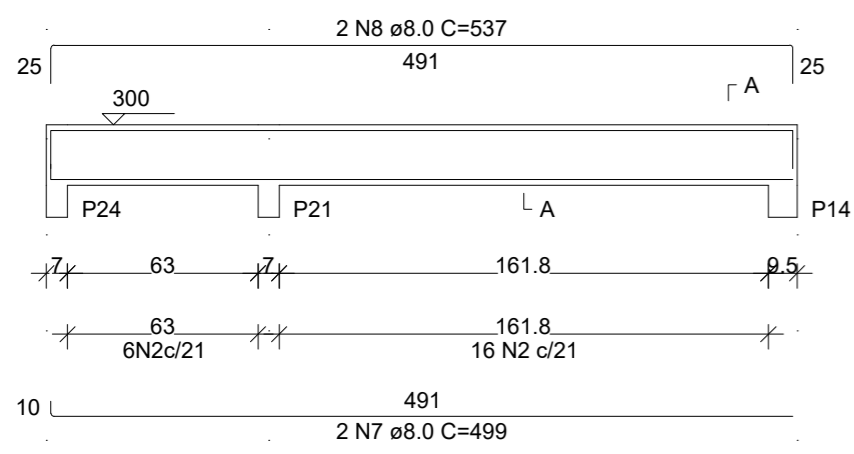
#### SEÇÃO A-A

ESC 1:25



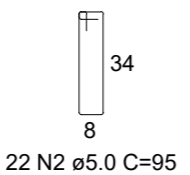
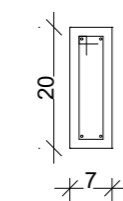
### V15

ESC 1:50



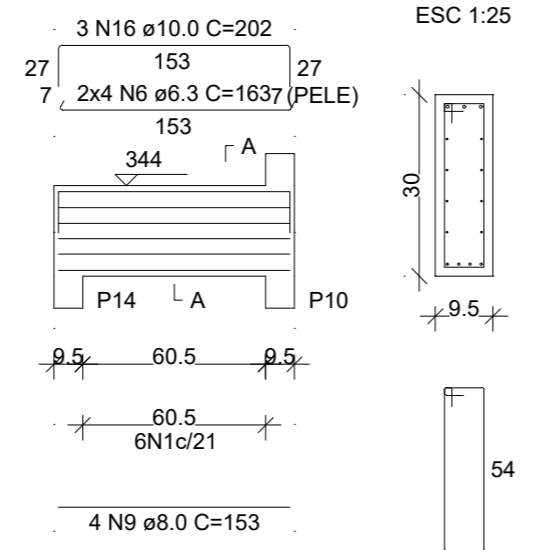
#### SEÇÃO A-A

ESC 1:25



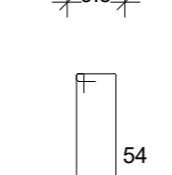
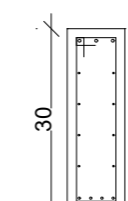
### V16

ESC 1:50



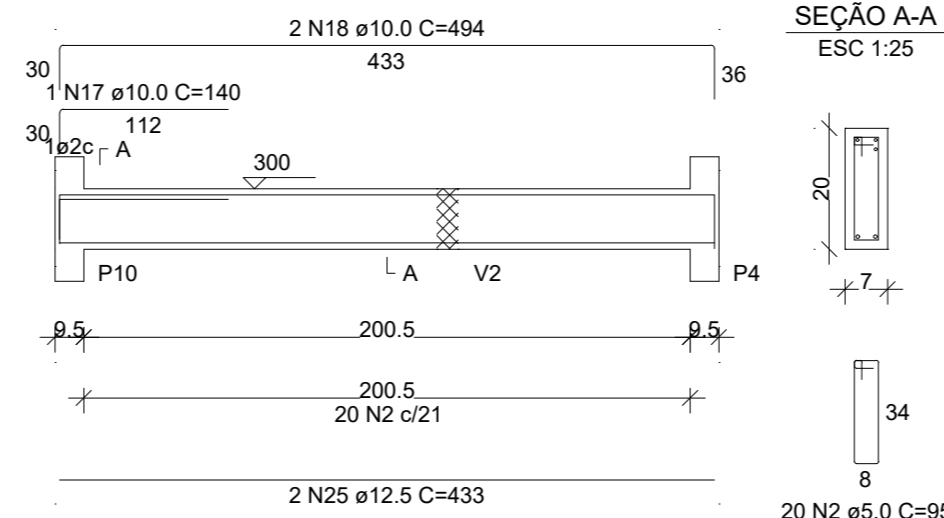
#### SEÇÃO A-A

ESC 1:25



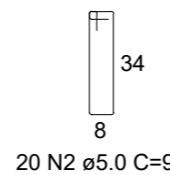
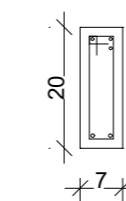
### V17

ESC 1:50



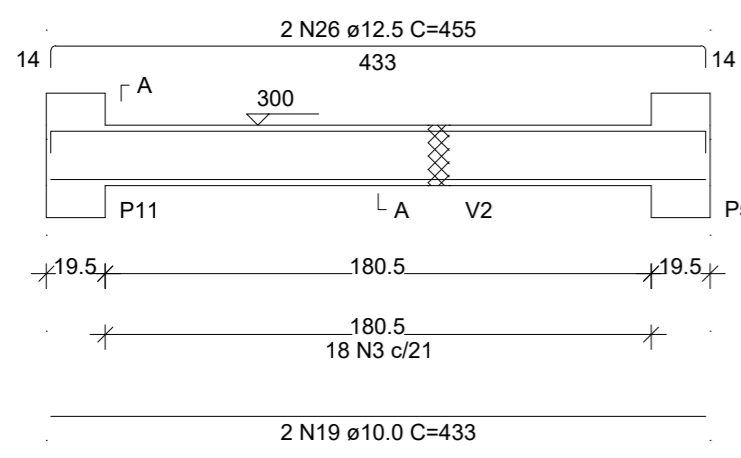
#### SEÇÃO A-A

ESC 1:25



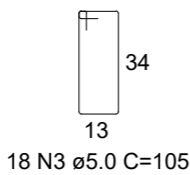
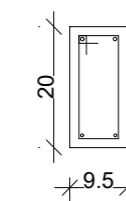
### V18

ESC 1:50



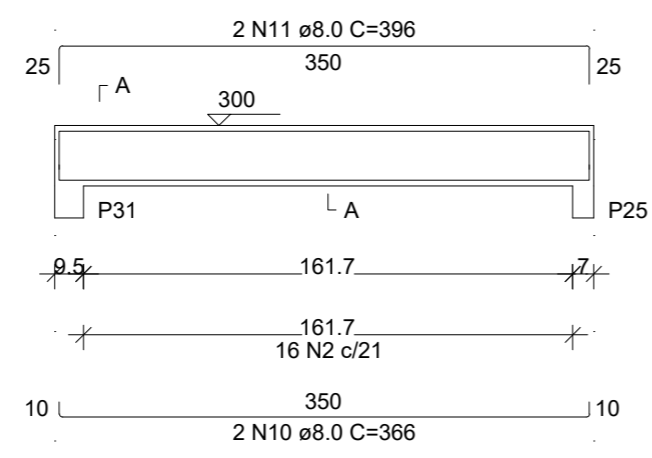
#### SEÇÃO A-A

ESC 1:25



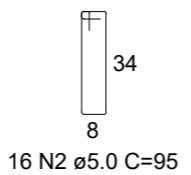
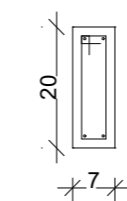
### V19

ESC 1:50



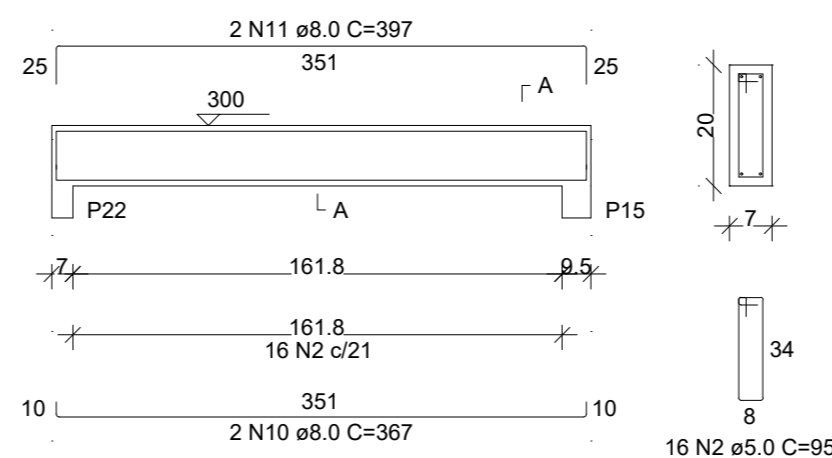
#### SEÇÃO A-A

ESC 1:25



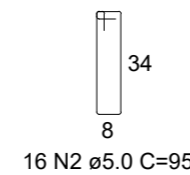
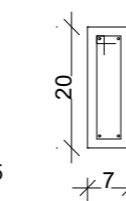
### V20

ESC 1:50



#### SEÇÃO A-A

ESC 1:25



#### RELAÇÃO DO AÇO

AÇO	N	DIAM (mm)	QUANT	C.UNIT (cm)	C.TOTAL (cm)
V12					
V15					
V18					
V13					
V16					
V19					
V14					
V17					
V20					
CA60	1	5.0	52	145	7540
	2	5.0	154	95	14630
	3	5.0	18	105	1890
CA50	4	6.3	8	976	7808
	5	6.3	2	89	178
	6	6.3	8	163	1304
	7	8.0	2	499	998
	8	8.0	2	537	1074
	9	8.0	4	153	612
	10	8.0	4	366	1464
	11	8.0	4	396	1584
	12	10.0	2	420	840
	13	10.0	2	831	1662
	14	10.0	1	200	200
	15	10.0	2	866	1732
	16	10.0	3	202	606
	17	10.0	1	140	140
	18	10.0	2	494	988
	19	10.0	2	433	866
	20	12.5	6	985	5910
	21	12.5	1	206	206
	22	12.5	1	236	236
	23	12.5	2	291	582
	24	12.5	2	973	1946
	25	12.5	2	433	866
	26	12.5	2	455	910
	27	16.0	1	264	264
	28	16.0	1	299	299
	29	16.0	2	379	758
	30	16.0	2	1053	2106

#### RESUMO DO AÇO

AÇO	DIAM (mm)	C.TOTAL (m)	QUANT + 0% (Barras)	PESO + 0% (kg)
CA50	6.3	92.9	8	22.7
	8.0	57.4	5	22.6
	10.0	70.3	6	43.4
	12.5	106.6	9	102.7
	16.0	34.3	3	54.1
CA60	5.0	240.6	-	37.1
PESO TOTAL (kg)				
CA50		245.5		
CA60		37.1		


Volume de concreto (C-25) = 3.26 m<sup>3</sup>  
Área de forma = 34.76 m<sup>2</sup>

REVISÃO	DESCRIÇÃO	DATA	VISTO

OBRA/SERVIÇO: Detalhamento de Vigas - Pavimento Cobertura Nível 300

ENDEREÇO: Rua Ceci Leite Costa, Bairro Santo Antônio, Taquari/RS

TÍTULO: Centro Especial de Amparo à Criança e ao Adolescente - CEACAT

	<b>PROPRIETÁRIO:</b> _____ PREFEITURA DE TAQUARI	<b>PRANCHA Nº:</b> <b>EST.</b> <b>16/20</b>
	<b>RESPONSÁVEL TÉCNICO PELO PROJETO ESTRUTURAL</b> _____ SÉRGIO VINÍCIUS NOSCHANG - ENG. CIVIL - CREA RS152282	

239,56 m <sup>2</sup> ÁREA	1/50 ESCALA	Julho/2023 DATA	0 REVISÃO
-------------------------------	----------------	--------------------	--------------