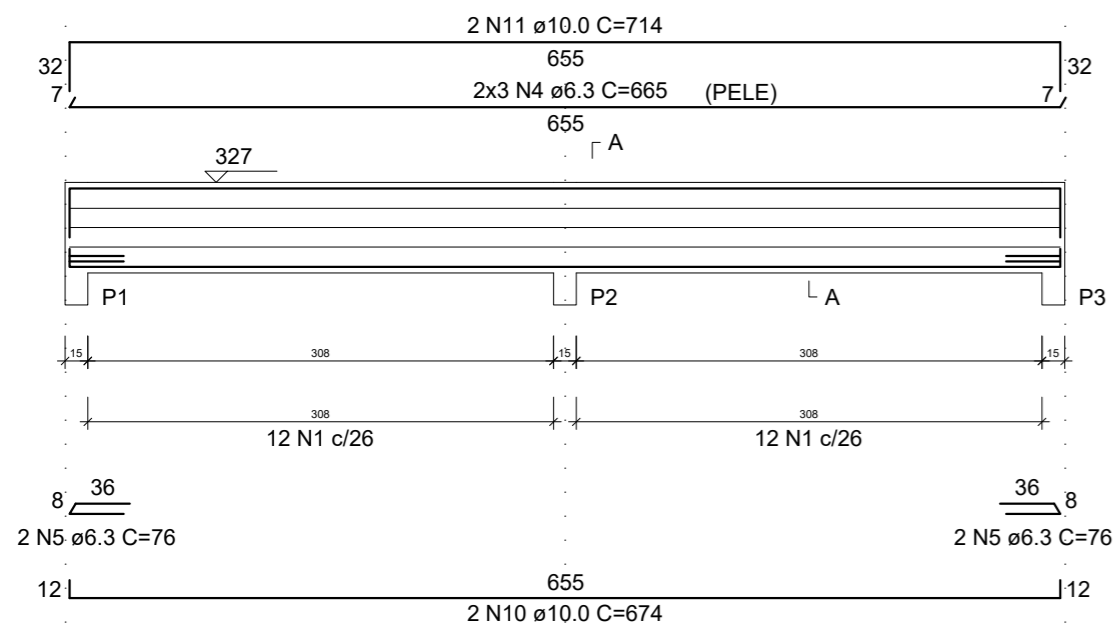


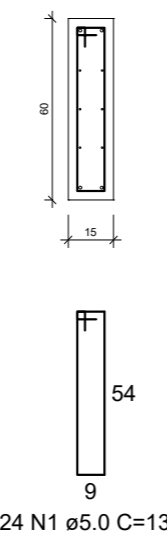
### V1

ESC 1:50



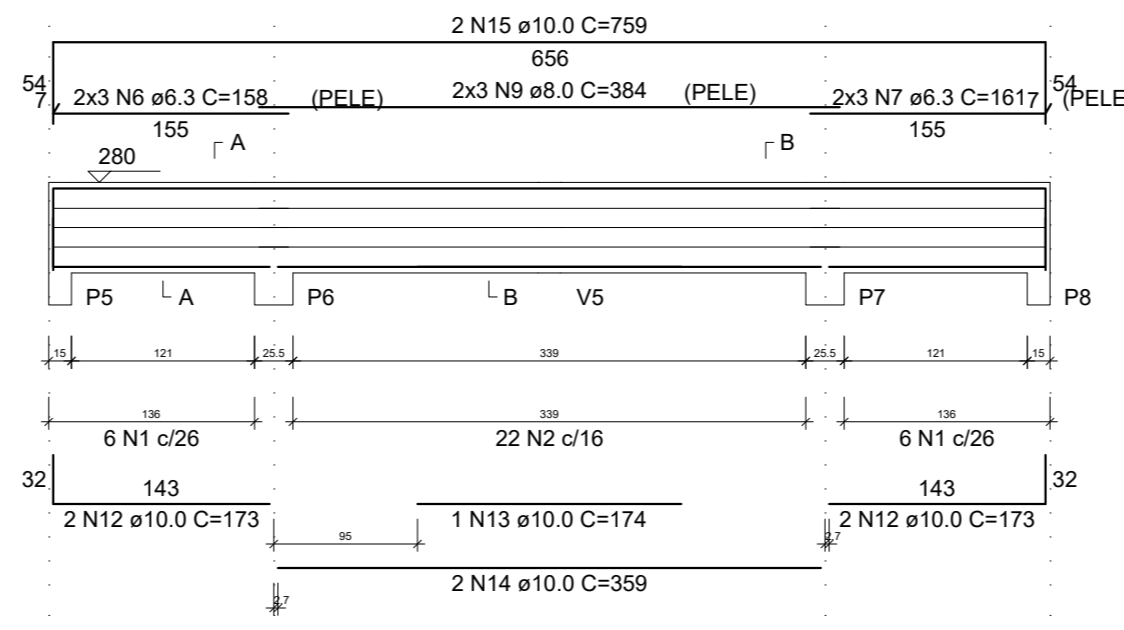
### SEÇÃO A-A

ESC 1:25



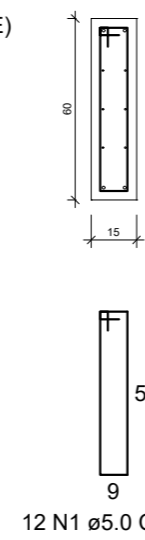
### V2

ESC 1:50



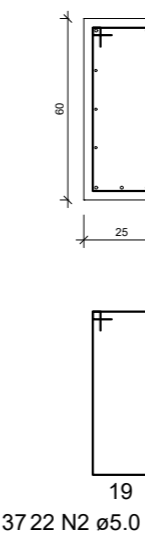
### SEÇÃO A-A

ESC 1:25



### SEÇÃO B-B

ESC 1:25



### RELAÇÃO DO AÇO

AÇO	N	DIAM (mm)	QUANT	C.UNIT (cm)	C.TOTAL (cm)
CA60	1	5.0	115	137	15755
	2	5.0	22	157	3454
	3	5.0	31	77	2387
CA50	4	6.3	12	665	7980
	5	6.3	4	76	304
	6	6.3	6	158	948
	7	6.3	6	161	966
	8	6.3	12	728	8736
	9	8.0	6	384	2304
	10	10.0	2	674	1348
	11	10.0	4	714	2856
	12	10.0	4	173	692
	13	10.0	1	174	174
	14	10.0	2	359	718
	15	10.0	2	759	1518
	16	10.0	1	446	446
	17	10.0	2	655	1310
	18	10.0	4	755	3020
	19	10.0	2	535	1070
	20	10.0	1	195	195
	21	10.0	2	576	1152
	22	12.5	2	230	460
	23	12.5	4	799	3196

### RESUMO DO AÇO

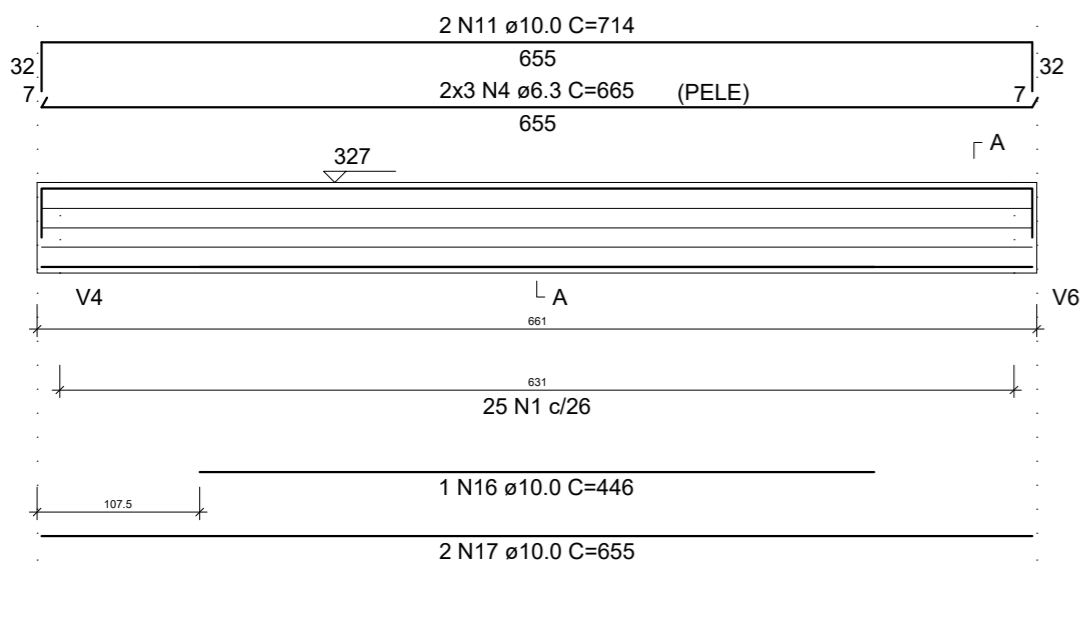
AÇO	DIAM (mm)	C.TOTAL (m)	PESO + 0% (kg)
CA50	6.3	189.3	46.3
	8.0	23	9.1
	10.0	145	89.4
	12.5	36.6	35.2
CA60	5.0	216	33.3

PESO TOTAL (kg)	
CA50	180
CA60	33.3

Volume de concreto (C-25) = 3.56 m³  
Área de forma = 50.94 m²

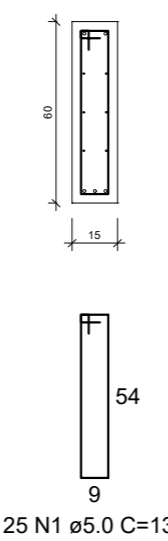
### V3

ESC 1:50



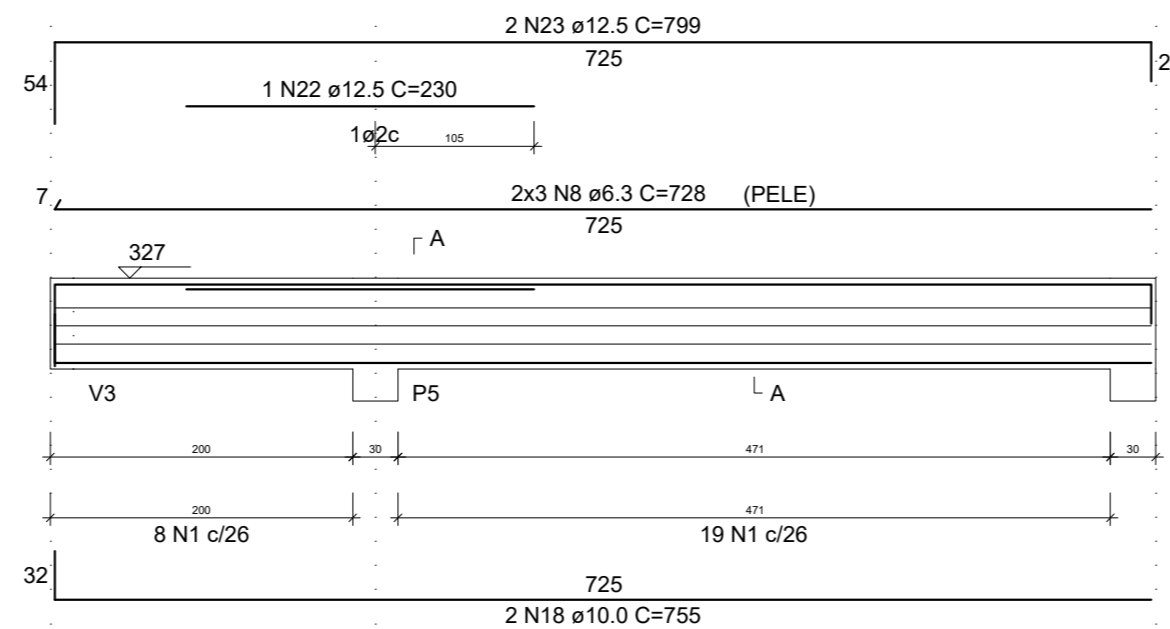
### SEÇÃO A-A

ESC 1:25



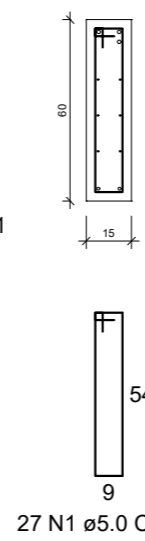
### V4

ESC 1:50



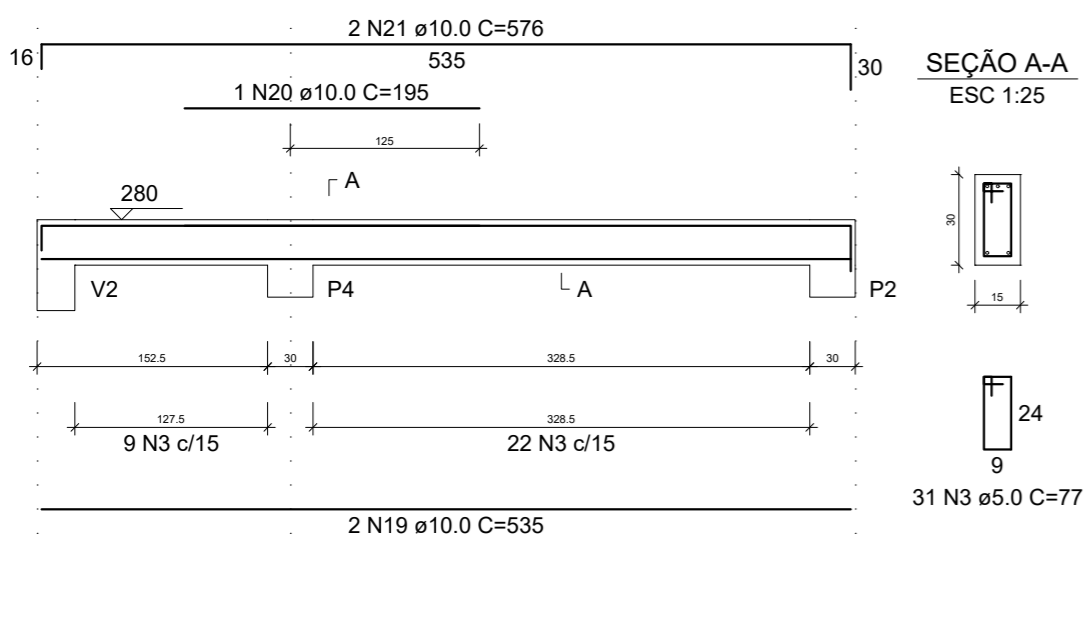
### SEÇÃO A-A

ESC 1:25



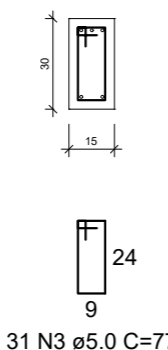
### V5

ESC 1:50



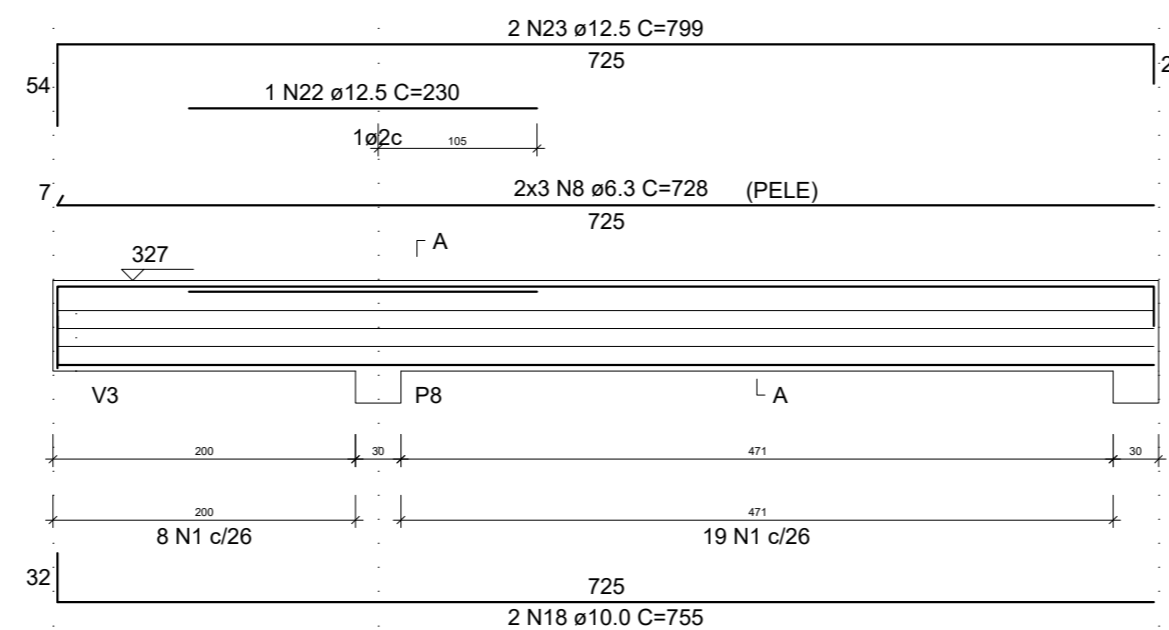
### SEÇÃO A-A

ESC 1:25



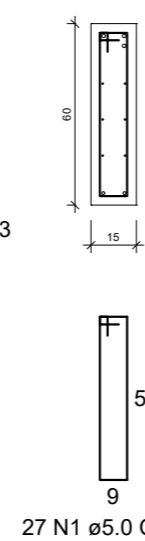
### V6

ESC 1:50



### SEÇÃO A-A

ESC 1:25



REVISÃO	DESCRIÇÃO	DATA	VISTO

OBRA/SERVIÇO: Detalhamento de Vigas - Cobertura

ENDEREÇO: Rua Osvaldo Aranha, Taquari/RS

TÍTULO: Reforma e Ampliação do Pavilhão de Esportes da Praça da Bandeira

PROPRIETÁRIO: PREFEITURA DE TAQUARI	PRANCHA Nº: EST. 07/07
RESPONSÁVEL TÉCNICO PELO PROJETO ESTRUTURAL: SÉRGIO VINÍCIUS NOSCHANG - ENG. CIVIL - CREA RS152282	

49,02 m² ÁREA	1/50 ESCALA	Junho/2021 DATA	0 REVISÃO
------------------	----------------	--------------------	--------------