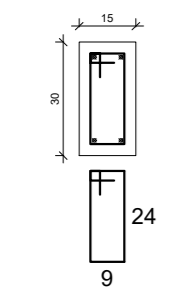


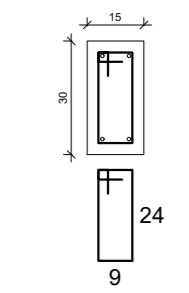
P9

CX D'AGUA - L4
ESC 1:20



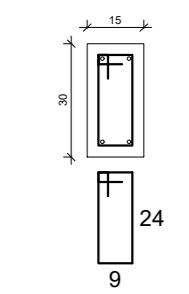
9 N1 ø5.0 C=77

PLATIBANDA - L3
ESC 1:20



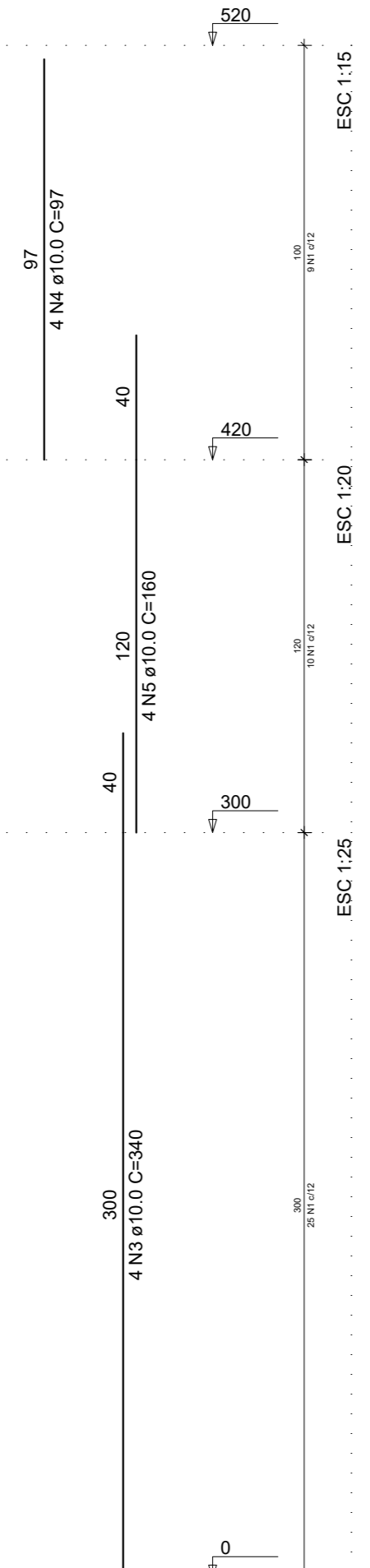
10 N1 ø5.0 C=77

COBERTURA - L2
ESC 1:20



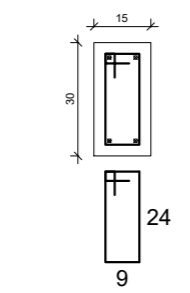
25 N1 ø5.0 C=77

TÉRREO - L1



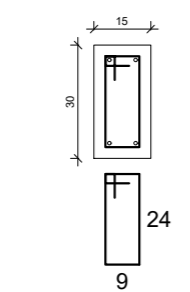
P10

PLATIBANDA - L3
ESC 1:20



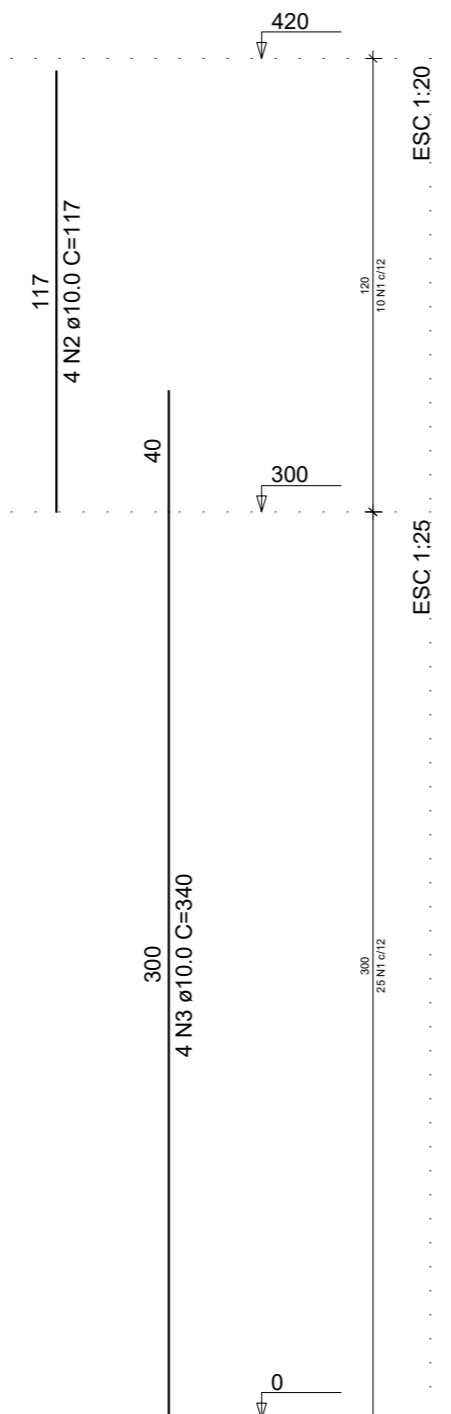
10 N2 ø10.0 C=117

COBERTURA - L2
ESC 1:20



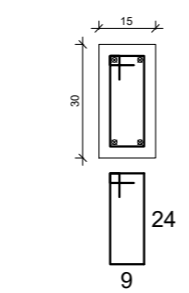
25 N1 ø5.0 C=77

TÉRREO - L1



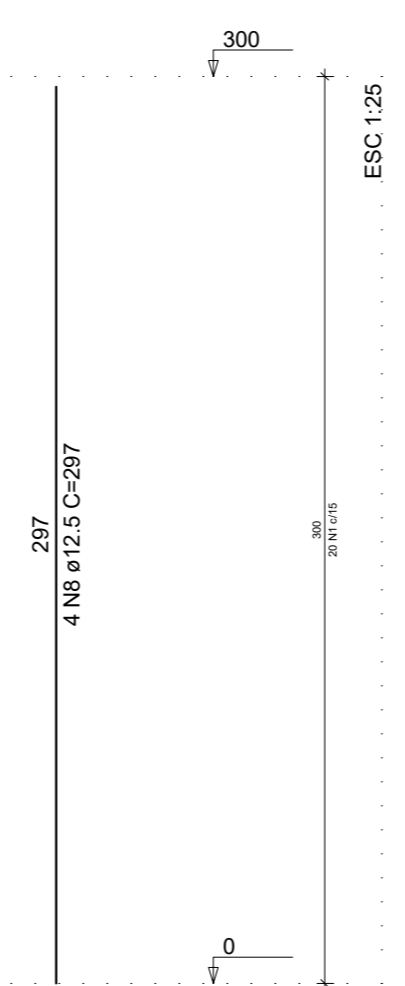
P11

COBERTURA - L2
ESC 1:20



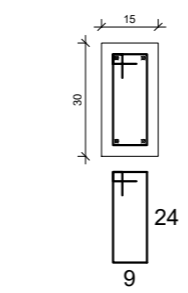
20 N1 ø5.0 C=77

TÉRREO - L1



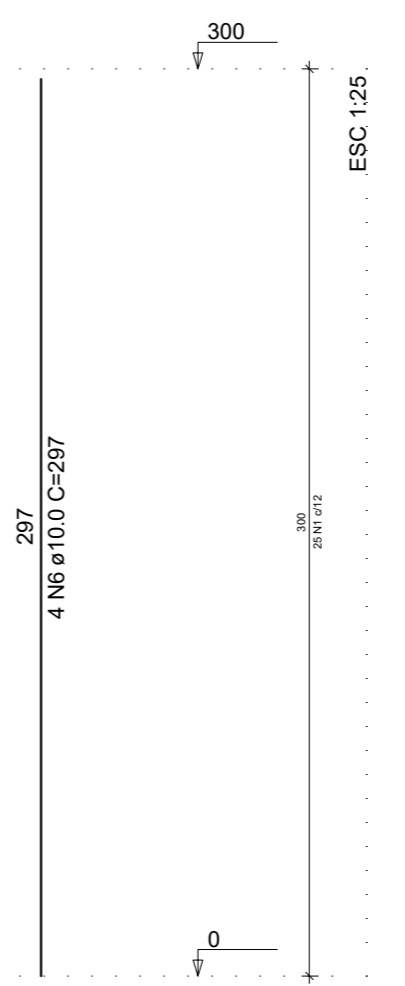
P12

COBERTURA - L2
ESC 1:20



25 N1 ø5.0 C=77

TÉRREO - L1



REVISÃO	DESCRIÇÃO	DATA	VISTO

OBRA/SERVIÇO: Detalhamento de Pilares

ENDEREÇO: Estrada TK 35, Taquari/RS

TÍTULO: AMPLIAÇÃO - CASA DE RECUPERAÇÃO CONGREGAÇÃO DE DAVI

PROPRIETÁRIO:
PREFEITURA DE TAQUARI

RESPONSÁVEL TÉCNICO PELO PROJETO ESTRUTURAL:
SÉRGIO VINÍCIUS NOSCHANG - ENG. CIVIL - CREA RS152282

PRANCHA Nº:
EST.
08/19

140,06 m ² ÁREA	1/50 ESCALA	Abril/2021 DATA	0 REVISÃO
-------------------------------	----------------	--------------------	--------------