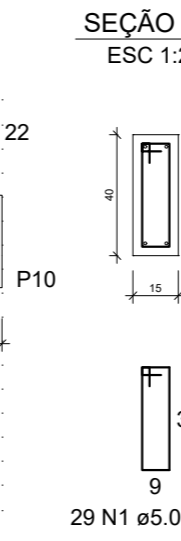
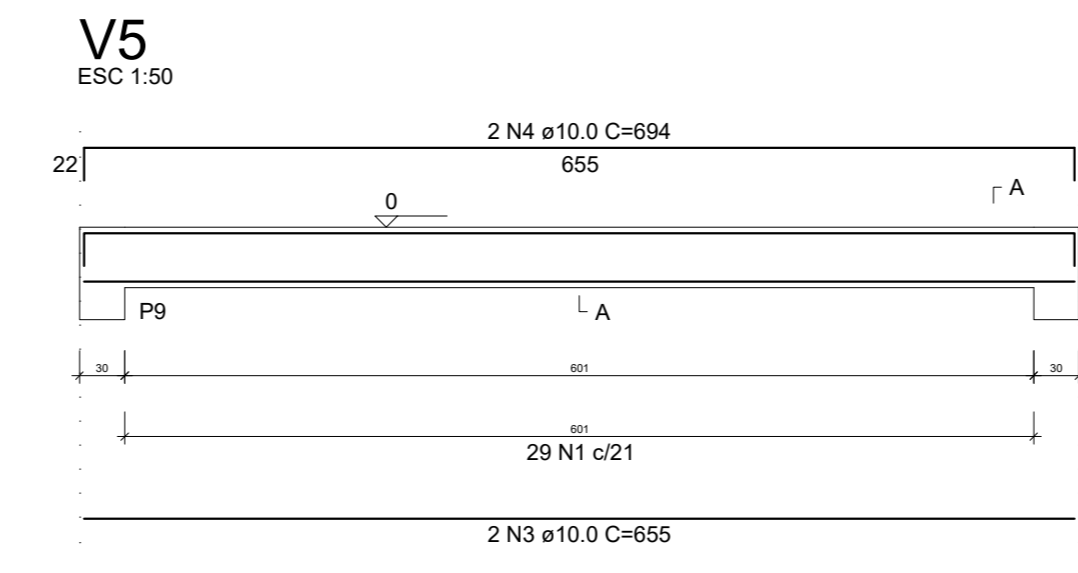
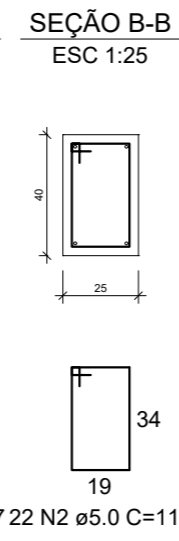
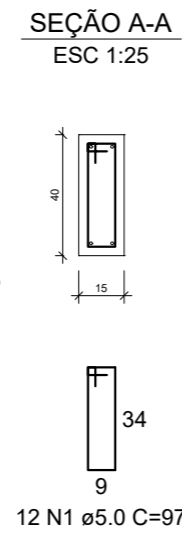
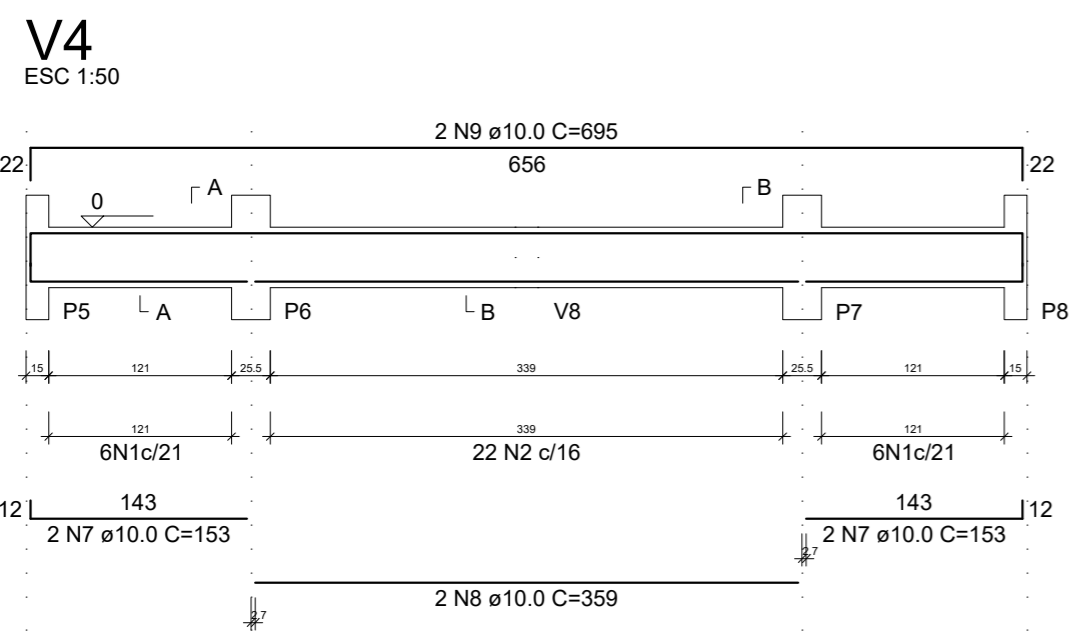


RELAÇÃO DO AÇO

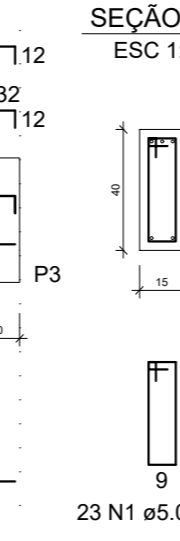
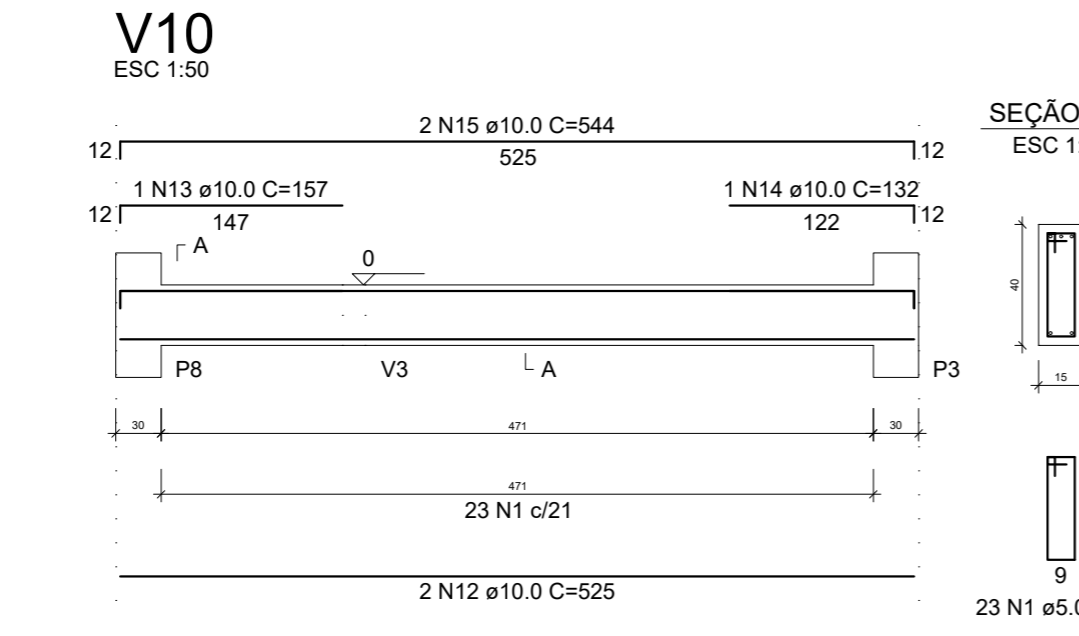
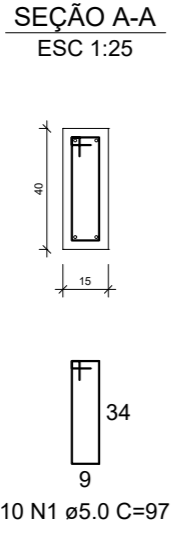
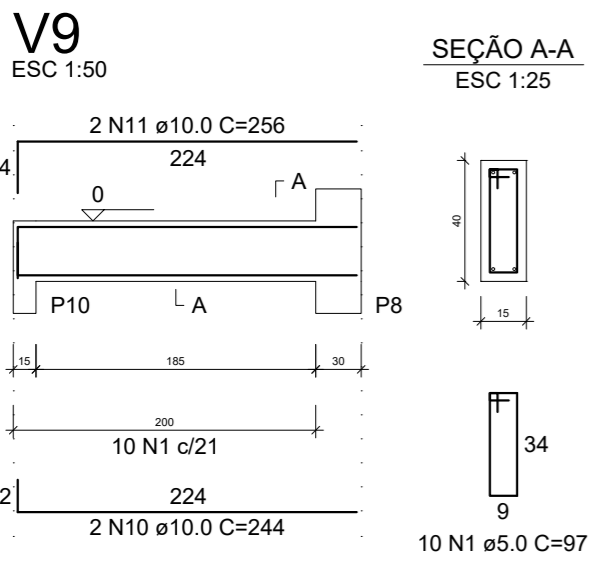
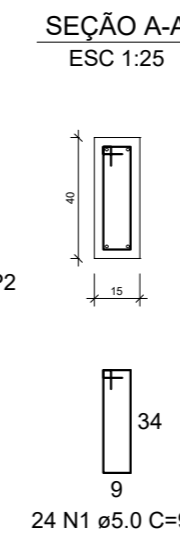
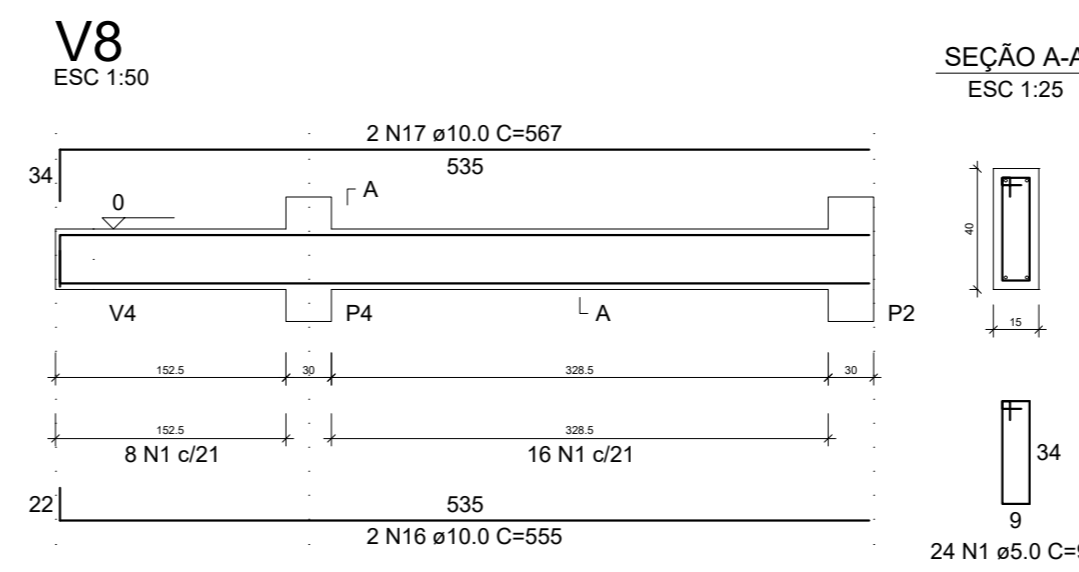
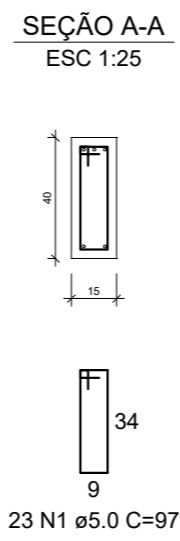
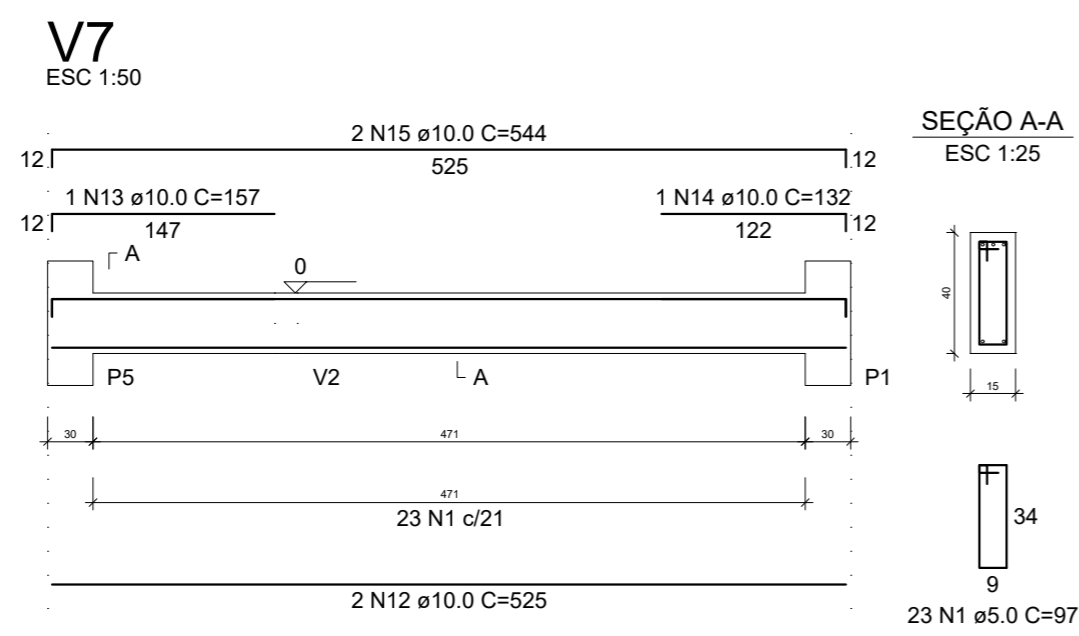
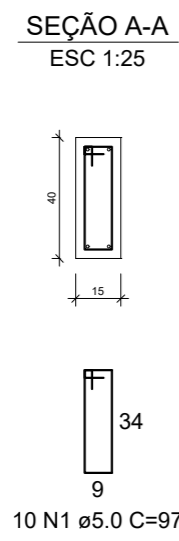
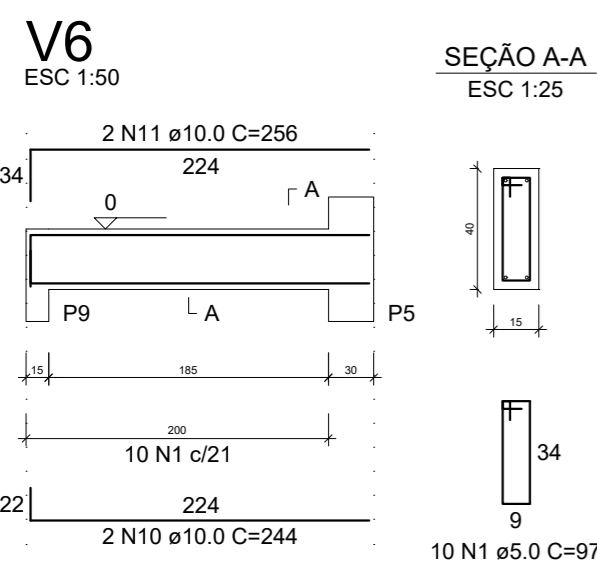
AÇO	N	DIAM (mm)	QUANT	C.UNIT (cm)	C.TOTAL (cm)
CA60	1	5.0	191	97	18527
	2	5.0	22	117	2574
CA50	3	10.0	4	655	2620
	4	10.0	4	694	2776
	5	10.0	4	332	1328
	6	10.0	4	387	1548
	7	10.0	4	153	612
	8	10.0	2	359	718
	9	10.0	2	695	1390
	10	10.0	4	244	976
	11	10.0	4	256	1024
	12	10.0	4	525	2100
	13	10.0	2	157	314
	14	10.0	2	132	264
	15	10.0	4	544	2176
	16	10.0	2	555	1110
	17	10.0	2	567	1134



RESUMO DO AÇO

AÇO	DIAM (mm)	C.TOTAL (m)	PESO + 0% (kg)
CA50	10.0	200.9	123.9
CA60	5.0	211	32.5
PESO TOTAL (kg)			
CA50			123.9
CA60			32.5

Volume de concreto (C-30) = 2.98 m³
Área de forma = 45.23 m²



REVISÃO	DESCRIÇÃO	DATA	VISTO
01	AJUSTE DE PLANILHAS DE QUANTITATIVOS	28/05/2021	OK

OBRA/SERVIÇO: Detalhamento de Vigas - Térreo

ENDEREÇO: Rua Osvaldo Aranha, Taquari/RS

TÍTULO: Reforma e Ampliação do Pavilhão de Esportes da Praça da Bandeira

PROPRIETÁRIO: PREFEITURA DE TAQUARI

RESPONSÁVEL TÉCNICO PELO PROJETO ESTRUTURAL: SÉRGIO VINÍCIUS NOSCHANG - ENG. CIVIL - CREA RS152282

PRANCHA Nº: EST. 04/07

49,02 m²	1/50	Junho/2021	0
ÁREA	ESCALA	DATA	REVISÃO