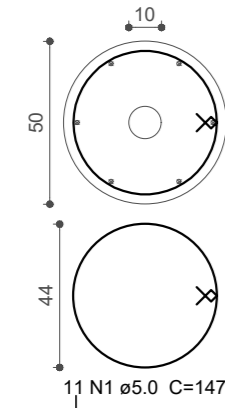
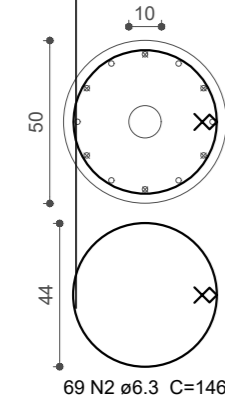


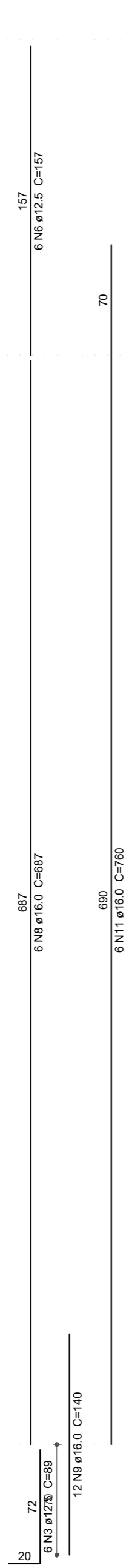
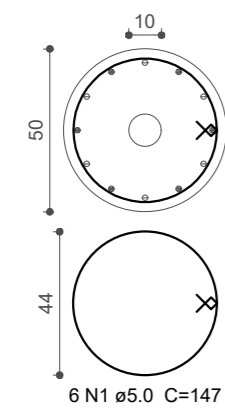
P6
TIRANTE - L3
ESC 1:20



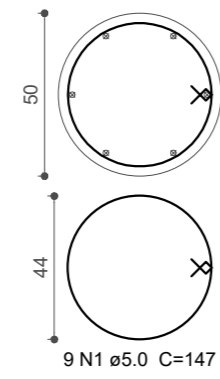
COBERTURA - L2
ESC 1:20



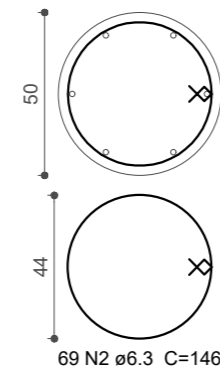
TÉRREO - L1
ESC 1:20



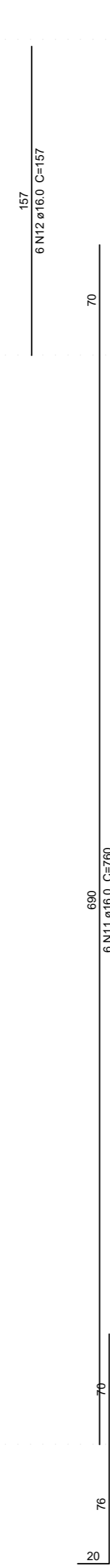
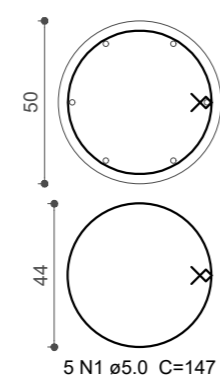
P7
TIRANTE - L3
ESC 1:20



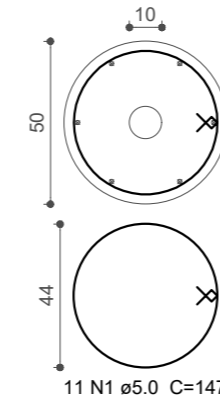
COBERTURA - L2
ESC 1:20



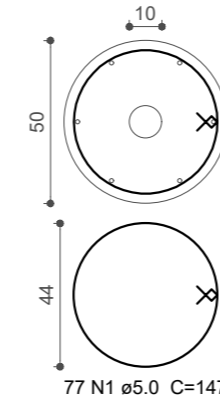
TÉRREO - L1
ESC 1:20



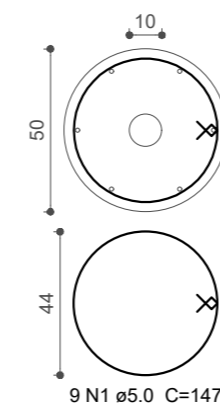
P8
TIRANTE - L3
ESC 1:20



COBERTURA - L2
ESC 1:20



TÉRREO - L1
ESC 1:20



Prefeitura Municipal de Taquari

Estado do Rio Grande do Sul

Fone: (51)3653-6200 (224) e-mail: planejamento@taquari.rs.com.br

Departamento de Engenharia & Arquitetura

Obra: Centro de Comercialização de Produtos Associados ao Turismo

Descrição: Projeto Estrutural Pilares e Fundações

Endereço da obra: Rua Vereador Praia, S/N

Responsável projeto Estrutural de Concreto Armado
Eng. Sérgio Noschang CREA 152282 **Área:** 358,60m²

Data:
Julho/2019

Escala:
Indicada

Prancha:
07-11